

**ALUMINOX**  
Comercial **BJ** desde 1975



BRIDAS CIEGAS

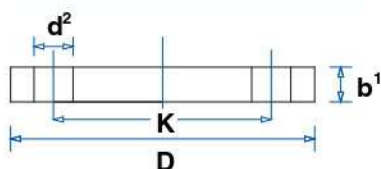
BRIDAS PLANAS

# ALUMINOX

Comercial B<sub>J</sub> desde 1975

## BRIDAS CIEGAS

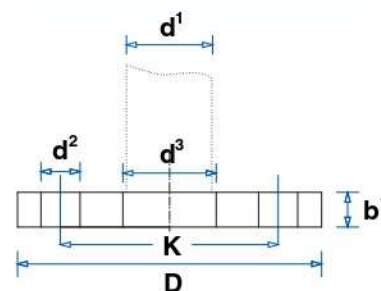
DIN 2527  
PN-10  
AISI 304  
304-L  
316  
316-L



D.N	D	b¹	Nº Taladros	K	d²	Tomillos
10	90	14	4	60	14	M-12
15	95	14	4	65	14	M-12
20	105	16	4	75	14	M-12
25	115	16	4	85	14	M-12
32	140	16	4	100	18	M-16
40	150	16	4	110	18	M-16
50	165	18	4	125	18	M-16
65	185	18	4	145	18	M-16
80	200	20	4/8	160	18	M-16
100	220	20	8	180	18	M-16
125	250	22	8	210	18	M-16
150	285	22	8	240	23	M-20
200	340	24	8/12	295	23	M-20
250	395	26	12	350	23	M-20
300	445	26	12	400	23	M-20
350	505	26	16	460	23	M-20
400	565	26	16	515	26	M-24
500	670	28	20	620	26	M-24

## BRIDAS PLANAS

DIN 2576  
PN-10  
AISI 304  
304-L  
316  
316-L



D.N	D	d¹	d³	b¹	Nº Taladros	K	d²	Tomillos
10	90	14 17'2	14'5 17'7	14	4	60	14	M-12
15	95	18 21'3	18'5 21'8	14	4	65	14	M-12
20	105	23 26'9	23'5 27'4	16	4	75	14	M-12
25	115	28 33'7	28'5 34'2	16	4	85	14	M-12
32	140	38 42'4	38'5 42'9	16	4	100	18	M-16
40	150	43 48'3	43'5 48'8	16	4	110	18	M-16
50	165	53 60'3 63	53'5 60'8 63'5	18	4	125	18	M-16
65	185	73 76'1	73'5 76'6	18	4	145	18	M-16
80	200	84 88'9	84'5 89'4	20	4/8	160	18	M-16
100	220	104 114'3	104'5 114'8	20	8	180	18	M-16
125	250	129 139'7	129'5 140'2	22	8	210	18	M-16
150	285	154 168'3	154'5 168'8	22	8	240	23	M-20
200	340	204 219'1	204'5 220'1	24	8/12	295	23	M-20
250	395	254 273	254'5 273'5	26	12	350	23	M-20
300	445	304 323'9	304'5 324'9	26	12	400	23	M-20
350	505	355,6 368	356,6 369	28	16	460	23	M-20
400	565	404 406'4	405 407'4	32	16	515	26	M-24
500	670	504 508	505 509	38	20	620	26	M-24